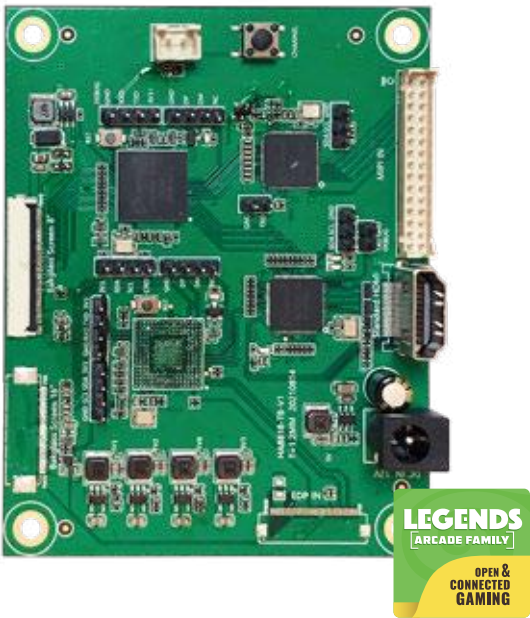


VIDEO INPUT BACKGLASS SWITCHBOARD  
FOR LEGENDS PINBALL MICRO

INSTRUCTION MANUAL



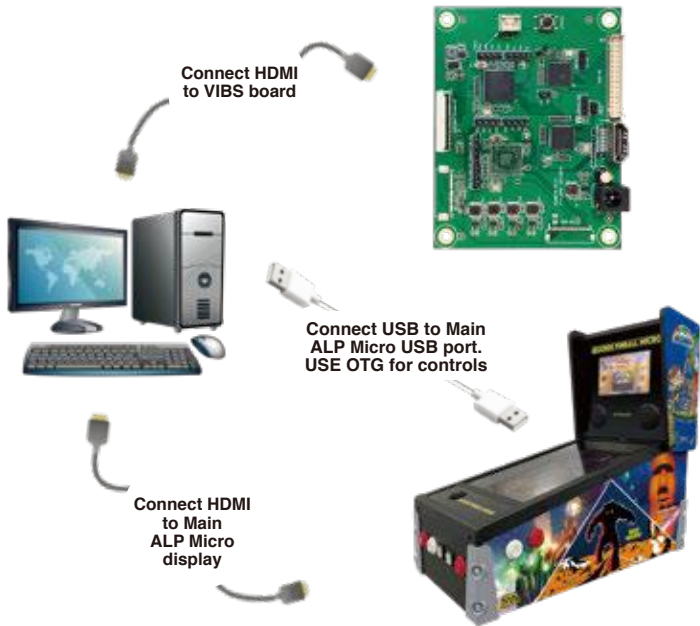
INTRODUCTION

The AtGames Video Input Backglass Switchboard for Legends Pinball Micro is the ultimate digital pinball accessory. Through the AtGames Open and Connected Pinball (OCP) initiative, you can connect your pinball engine-enabled external PC to the Legends Pinball Micro, utilizing its large, dual-screen display and arcade controls for the ultimate in pinball, arcade, and console gaming. The Video Input Backglass Switch, or VIBS, is used to connect the PC to the Legends Pinball Micro’s backglass display.

- Display custom backglass art and other content from your connected PC on your Legends Pinball Micro. It's the perfect way to take your pinball micro, arcade, and console gaming to the next level!
- Connects to your external PC via HDMI.
- Connects to Legends Pinball Micro via USB.
- Shows backglass art from your PC pinball video games, as well as other content.

**Note:** This product was not designed for the average user. Instead, it was created for a more technical DIY (Do It Yourself) user. The expectation is that the user of this product is experienced in modding and is prepared for and aware of the risks in the handling of sensitive electronic components. AtGames can only provide warranty coverage for this product (<https://www.atgames.net/arcades/warranty/>). For technical questions or other operational issues, you may find info on Wagner's Tech Talk at this link: [http://wagnerstechtalk.com/alpmicro/#VIBS\\_Troubleshooting](http://wagnerstechtalk.com/alpmicro/#VIBS_Troubleshooting). Or, please utilize The Official AtGames Pinball Fan Page on Facebook (<https://www.facebook.com/groups/166745557972535>).

HIGH LEVEL CONNECTION DIAGRAM



WARNINGS

Use extreme caution when handling the VIBS and the Legends Pinball Micro components. These are sensitive electronic devices and can be damaged if not handled properly.

**Note:** Be sure to unplug the power cable to the Legends Pinball Micro before starting the installation process.

TOOLS/PARTS REQUIRED

TOOLS/PARTS INCLUDED



VIBS board



Input Switch Button



Micro Switch



Button Wire



DC cable and Splitter

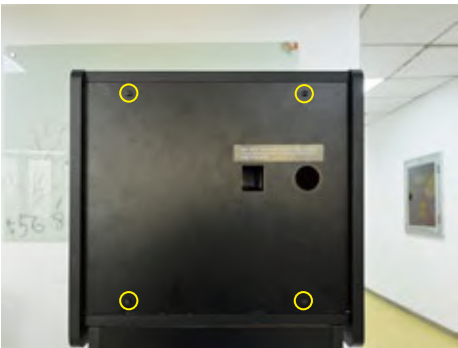


Screws x 4

TOOLS/PARTS NEEDED BUT NOT INCLUDED

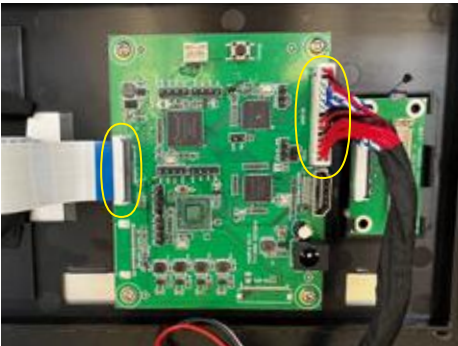
- A PC (with HDMI port)
- A HDMI cable
- A Phillips-head Screwdriver

ASSEMBLY STEPS



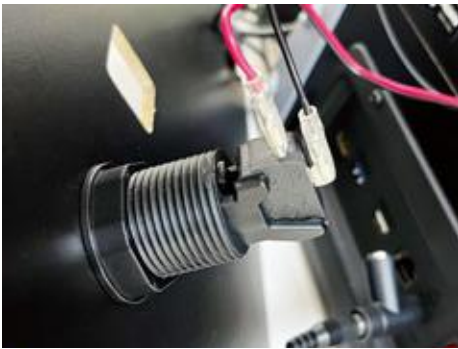
Step 1

Remove the back panel from the Backbox.



Step 4

Connect the FPC cable and LVDS cable to the VIBS board as circled.



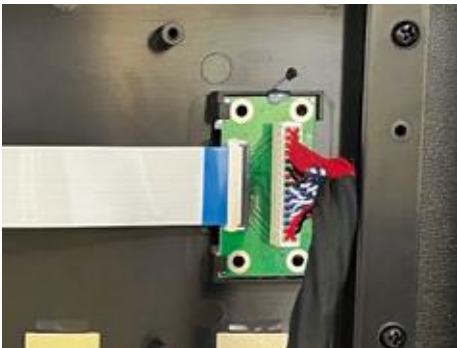
Step 7

Attach the micro switch and the button wire to the input switch button.



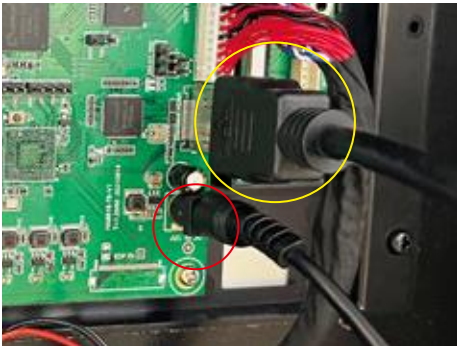
Step 10

Plug in the included splitter to the DC port on the back of the main cabinet and connect the DC cable to the splitter.



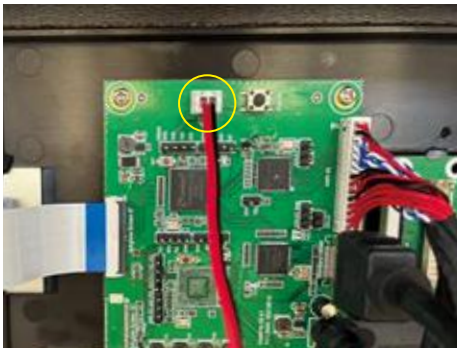
Step 2

Carefully disconnect the FPC cable and LVDS cable from the connector board.



Step 5

Plug in the DC cable to the VIBS board as circled in red. And plug in the HDMI cable to the VIBS board as circled in yellow.



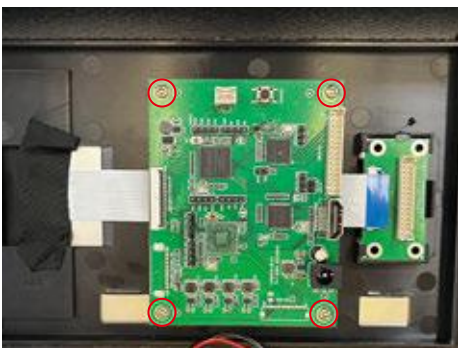
Step 8

Connect the button wire to the VIBS board as circled in yellow.



Step 11

After power on, you can start using the VIBS switch button to change the input for the backglass from the native Legends Pinball Micro video signal to the PC backglass display video signal. A single click will display the PC backglass signal on the backglass monitor, a second click will return the backglass view.



Step 3

Attach the VIBS board to the space circled in red with the four included screws and fasten them.



Step 6

Loosen the rim from the input switch button. Mount the input switch button on the pre-drilled round hole on back panel. And then fasten the rim to secure the input switch button.



Step 9

Feed the micro switch and the DC cable through the pre-drilled square hole on backbox panel. Re-attach the four screws removed previously in step #1 and fasten them to secure the back panel.

WARRANTY INFO

The manufacturer warrants this product to be free and clear of defects in the materials and workmanship, under normal residential use and conditions, for a period of ninty (90) days from the original date of product receipt. Shipping and handling fees are to be paid for by the customer. To make a warranty claim, please submit a service request here: <https://www.atgames.net/arcades/contact/>.

Standard warranty coverage for the AtGames Legends Pinball Micro VIBS does not apply to and is considered invalid due to misuse, improper maintenance, self-repair, tampering, invasive hardware modifications of any kind, or non-manufacturing related causes. Exchanges due to damages or dysfunction caused by shipping must go through the authorized retailer/reseller where the product was purchased.

Use of VIBS is at the user’s own risk. If VIBS or the Legends Pinball Micro is damaged by the user in any way for any reason, the user is responsible for the cost of replacement parts and any associated fees, including shipping.

Note: Standard warranty services are valid with receipt from an authorized US retailer or AtGames E-Store. Purchases through third-party sellers and resellers, or those entities outside the US, do not fall under the standard warranty program. For warranty support, please contact the third-party seller or reseller where you purchased the product. Please find the latest AtGames Warranty policy at: <https://www.atgames.net/arcades/warranty>

SAFETY NOTICE

- Do not submerge the device in water or expose it to extreme heat or to strong magnetic fields. Doing so may cause permanent damage to your device.
- Always use a dry towel to clean the device.
- Transformers are suitable for indoor use only. Transformers and power supplies for toys are not intended to be used as toys, and the use of these products by children shall be under the full supervision of parents.

FCC STATEMENT

This equipment has been tested and found to comply with the limits for a Class B digital device, pursuant to Part 15 of the FCC Rules. These limits are designed to provide reasonable protection against harmful interference in a residential installation. This equipment generates, uses and can radiate radio frequency energy and, if not installed and used in accordance with the instructions, may cause harmful interference to radio communications. However, there is no guarantee that interference will not occur in a particular installation. If this equipment does cause harmful interference to radio or television reception, which can be determined by turning the equipment off and on, the user is encouraged to try to correct the interference by one or more of the following measures:

- Reorient or relocate the receiving antenna.
- Increase the separation between the equipment and receiver.
- Connect the equipment into an outlet on a circuit different from that to which the receiver is connected.
- Consult the dealer or an experienced radio/TV technician for help.

Changes or modifications not expressly approved by the party responsible for compliance could void the user’s authority to operate the equipment.

Do not submerge the device in water or expose it to extreme heat or to strong magnetic fields. Doing so may cause permanent damage to your device.  
Always use a dry towel to clean the device.

Transformers are suitable for indoor use only. Transformers and power supplies for toys are not intended to be used as toys, and the use of these products by children shall be under the full supervision of parents.

Safety Notice  
CAN ICES 3 (B)/NMB 3(B)



[www.atgames.us](http://www.atgames.us)



Please find the most updated product info at [www.atgames.us](http://www.atgames.us).  
For customer service, warranty info, and technical support please find us here:  
<https://www.atgames.net/arcades/contact/>



**AtGAMES**  
© 2022 AtGames Interactive  
[www.atgames.net](http://www.atgames.net)  
PO Box 1691, El Segundo, CA 90245  
All rights reserved.

\*Content and images are for reference only and subject to change.  
The trademarks and images are the properties of  
their respective owners. © 2022 AtGames

Made in China

